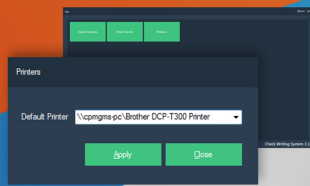
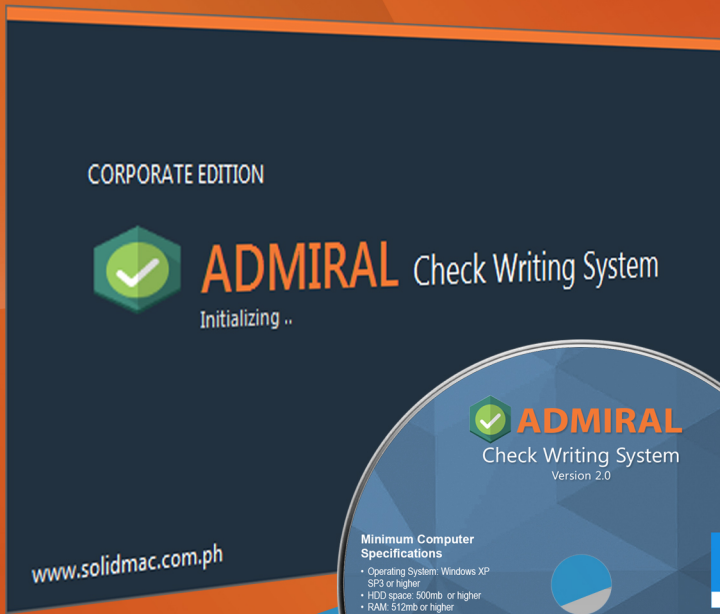




# ADMIRAL

## Check Writing System RETAIL EDITION



- Check Format Designer**  
\* Newly improved with date format selector and parameterized fields
- Single or Batch Printing**  
• **Direct Encode (thru the system)**  
• **File Import (MS Excel format)**  
\* New feature

Being our standard "consumer" version, the Retail Edition offers the basic elements of check printing application, namely

### BENEFITS AND ADVANTAGES

- Streamlines payment process and reduces administrative costs (no hardware to maintain).
- Automates check processing thus reduces errors that are typical in manual check disbursements or handling.
- Create unlimited check formats with custom alignments and parameterized fields through the built-in check format designer
- Compatibility with almost all types of printers thus giving the user control of picking the right hardware for their check printing needs
- User-friendly user interface for easy navigation and quick learning of the system.
- Every license is perpetually exclusive and can be activated online for legal use.
- Fully compliant with the check format requirements of the Philippine Clearing House Corporation (PCHC) and Bangko Sentral ng Pilipinas (BSP).

### MINIMUM SYSTEM REQUIREMENTS

It is highly recommended that your machine meets the following minimum specifications:

- **HARDWARE - CENTRAL PROCESSING UNIT (CPU)**
  - 32-bit (x86) or 64-bit (x64) dual core processor
  - 512 MB of system memory
  - Atleast 500 MB available space for the software; additional storage space for other pre-requisite programs
  - Support for DirectX 9 graphics and 32 MB of graphics memory
  - Optical drive (DVD-ROM) • USB Interface (High Speed USB 2.0 or better)
- **PERIPHERALS - CRT, LCD or LED Monitor** (can handle resolution of 1024 x 768 or better)
- **SOFTWARE - OPERATING SYSTEM**
  - Microsoft Windows XP (32-bit, Service Pack 3 or later; 64-bit, Service Pack 2 or later)
  - Microsoft Windows Vista (32-bit and 64-bit , Service Pack 2 or later)
  - Microsoft Windows 7 (32-bit and 64-bit, Service Pack 1 or later)
  - Microsoft Windows 8 and 8.1 (32-bit and 64-bit) • Microsoft Windows 10 (32-bit and 64-bit)
- **OTHERS**
  - Software Driver for the Printer



## SOLID BUSINESS MACHINES CENTER, INC.

SUITE 303, SINGSON BUILDING, PLAZA MORAGA, BINONDO, MANILA, PHILIPPINES 1006  
 Trunkline : (632) 8242-1111 Connecting all Departments Fax No.: (632) 8242-1345, 8242-1348  
 e-mail: sales@solidmac.com.ph

[www.solidmac.com.ph](http://www.solidmac.com.ph)